

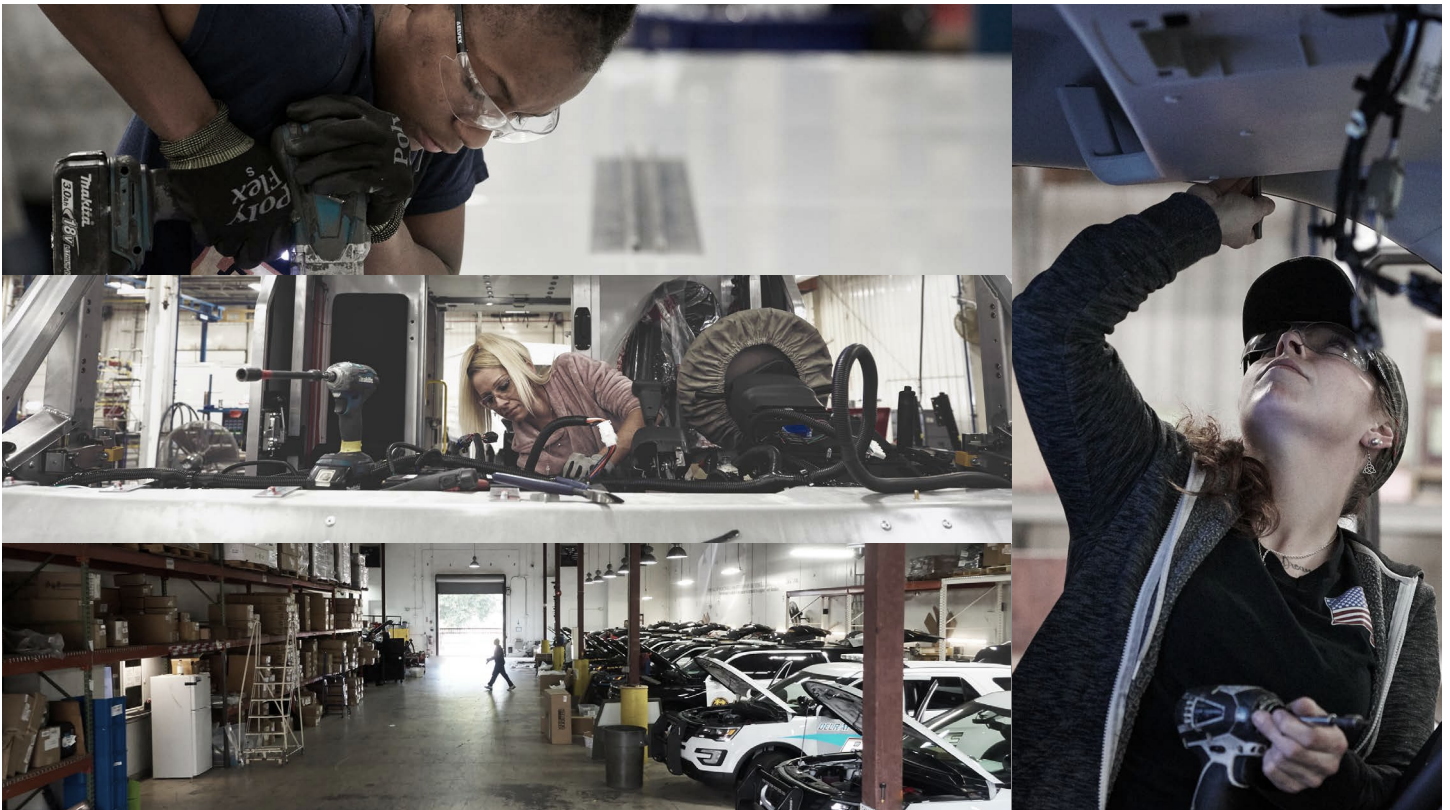


# A forward shift in the way specialty vehicles are built and delivered.

The marketplace is constantly expanding. Our economy continues to evolve at a frenzied pace with last mile delivery now ingrained in American everyday life, building booms from coast to coast from heavy infrastructure investment, and a substantive step forward towards all-electric solutions for commercial vehicles.

With our strategically located cross-country manufacturing centers, we have the flexibility to produce multiple products from our portfolio in multiple locations. Making true on the promise of coast-to-coast assembly and distribution, we help our partners become formidable national forces.

Backed by decades of experience, we provide the tools and technology to efficiently deliver people, packages, and services where they are needed most, The Shyft Group is purpose-built for the road ahead.



# Helping to make millions of deliveries a day.

Whether our customers are intent on delivering people, goods or services to the jobsite, dealership, dock or campsite, The Shyft Group delivers. The Shyft Group is the North American leader in specialty vehicle manufacturing, assembly, and upfit for the commercial, retail, and service specialty vehicle markets—bringing people, goods, and services where they need to be. We build commercial EVs from the ground up as well as custom chassis and service bodies. We also upfit and accessorize vehicles to improve every route, every run, every ride. Our proprietary Work-Driven Design™ consultative approach and unique cross-brand collaboration brings innovation to life on the road for an experience that is safer, more satisfying, more rewarding all around. With 50 years and millions of miles in this business, we continue to charge ahead leading the commercial vehicle transition to electric and earning our position among Fortune’s 100 Fastest Growing Companies.





# Fleet Vehicles & Services

First in last-mile delivery, The Shyft Group combines in-depth industry knowledge, engineering, manufacturing, assembly, and upfit expertise to deliver responsiveness, safety, and product quality to our customers.

We're committed to making continuous improvements that result in cost effective builds and corresponding solutions to meet today's demands and tomorrow's opportunities.

Our culture is centered around the unique needs of our fleet customers and we're driven to deliver the most well-designed, high-quality, and reliable fleet vehicles and upfit solutions in the industry. No matter what type of business we're serving, no matter their size.

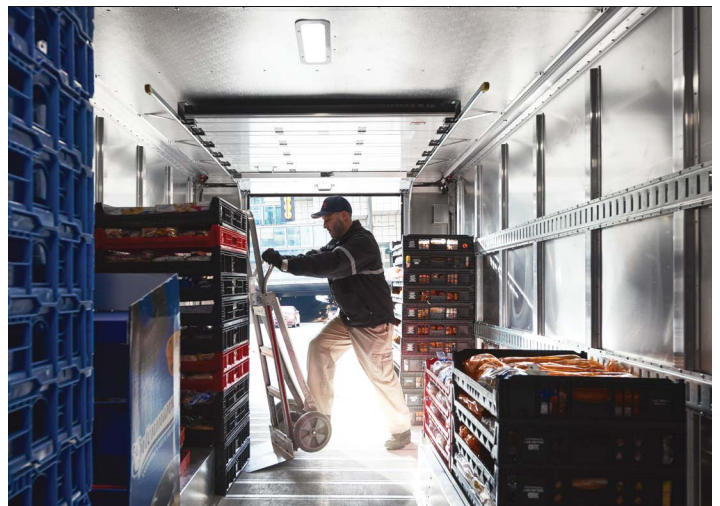


---

## Utilimaster

Moving ahead of the competition when delivering products and services requires precision, planning, and the perfect vehicle. With our unique Work-Driven Design® process, Utilimaster offers a wide range of vehicles and upfits that keep business moving at the speed of demand. From class 2-7 GVWR, Utilimaster builds and upfits the right vehicle for the right job.

That is how world-class brands like UPS, FedEx, the United States Postal Service, Amazon, Cintas, Con-Edison, and Frito-Lay deliver.



# Electric Vehicle Solutions

We understand the unique demands of commercial vehicles. Blue Arc EV Solutions draws on nearly 50 years of industry experience and our Work Driven Design™ process to create the first commercial-grade EV solution — fully reimagined. Leveraging the infrastructure behind Shyft's proven production and service networks, we are prepared to produce road-ready solutions at scale with speed to market.



---

## Blue Arc

We created Blue Arc™ to provide the commercial industry with commercial-grade EV solutions. Our EV solutions deliver purpose-built, truly sustainable products that are the culmination of decades' worth of experience in last mile delivery and custom chassis design and production experience. With our proven production capability, we are ready to electrify fleets at scale and charge ahead.



# Specialty Vehicles & Services

Whether it's a hardworking contractor, an adventure-seeking RV owner, or an OEM with production-capacity challenges in need of a manufacturing partner they can trust, The Shyft Group empowers its customers with the tools and technologies they need to stay ahead of the curve and the competition.



---

## Royal Truck Body

We work tirelessly to build service bodies for practically every vocation from construction and carpentry to plumbing and service maintenance. Royal Truck Body creates a durable, hardworking toolbox on wheels that helps get the job done. Royal Truck Body delivers the right truck body for our customers right on time.

Our wide range of service, contractor, and van bodies are competitively priced with more standard features than any other brand. For our customers, that means there's no need to order and wait for costly add-ons. We build rugged, reliable, heavy-duty bodies and components that provide extensive work and storage space that's well-organized, strong, and secure, just like the hardworking people that rely on Royal.



[RoyalTruckBody.com](http://RoyalTruckBody.com)



---

## DuraMag

Our DuraMag® brand offers building contractors, landscapers, movers, and other service maintenance customers high-strength, all-aluminum commercial truck and van body solutions to help them get their jobs done effectively and efficiently. DuraMag's range of products meet the needs of customers seeking lighter weight and rust and corrosion resistant truck bodies while providing greater payload capacity and easy access to the gear and equipment required for their given vocation.



[DuraMagbodies.com](http://DuraMagbodies.com)





---

## Magnum

Magnum® products elevate the look and style of pickup truck, while helping truck owners tackle more tasks while helping to keep their windows, cargo, and passengers safe. These products are built in the USA using tough welded aluminum, finished with a sleek powder coat for durability without the extra weight.

Whether someone's a weekend warrior setting up their truck with plow gear, lights, and flashy strobes, a carpenter transporting lumber to a job site, or just someone taking their canoe to the nearest fishing spot, a Magnum truck rack is a game-changer for their setup and curb appeal.

It's a breeze to attach these racks to the stake pockets in the truck bed, and with extras like truck bed rails and rear cargo racks from Magnum, the truck's hauling abilities go through the roof. Plus, they can deck out their truck with custom lights and tie-down options for that extra touch of personalization.

**MAGNUM** 

---

[MagnumTruckRacks.com](http://MagnumTruckRacks.com)

---

## Strobos-R-Us

Safety is the driving force at Strobos-R-Us. We distribute and install specialty upfit kits and lighting equipment for local, state, and federal law enforcement, municipalities, construction companies, and utility and telecom providers. If an emergency or service vehicle needs to be seen from a safe distance, Strobos-R-Us is there to light the way.



**STROBES R US**

---

[StrobosRUs.com](http://StrobosRUs.com)



---

### Spartan RV Chassis

Indulge in the exceptional with Spartan RV Chassis, the ride of choice for motorcoach owners who never settle for anything less than the very best. We've refined luxury travel, blending decades of innovation and American-made quality to create a ride like no other. From advanced safety features to best-in-class convenience, every aspect of a Spartan RV Chassis is designed to let you unwind, savor the scenic route, and relish the journey with complete peace of mind. Step into the elite circle of owners who choose the Spartan RV Chassis and embark on your next great adventure with the foundation that delivers reliability and luxury in every mile.



---

[SpartanRVChassis.com](http://SpartanRVChassis.com)

---

### Red Diamond Aftermarket Solutions

Elevate your RV experience with Red Diamond®, Spartan RV Chassis' preferred partner for aftermarket parts and services. We offer a curated selection of top-quality parts and accessories, tailored for your chassis and coach. With a focus on durability, safety, and performance, our Red Diamond® specialists partner with leading suppliers to ensure your journeys are smooth and exceptional. Find our authorized products at all Spartan RV Chassis service centers, and trust Red Diamond to maintain the excellence you deserve.



---

[RedDiamondParts.com](http://RedDiamondParts.com)





---

## **Builtmore Contract Manufacturing**

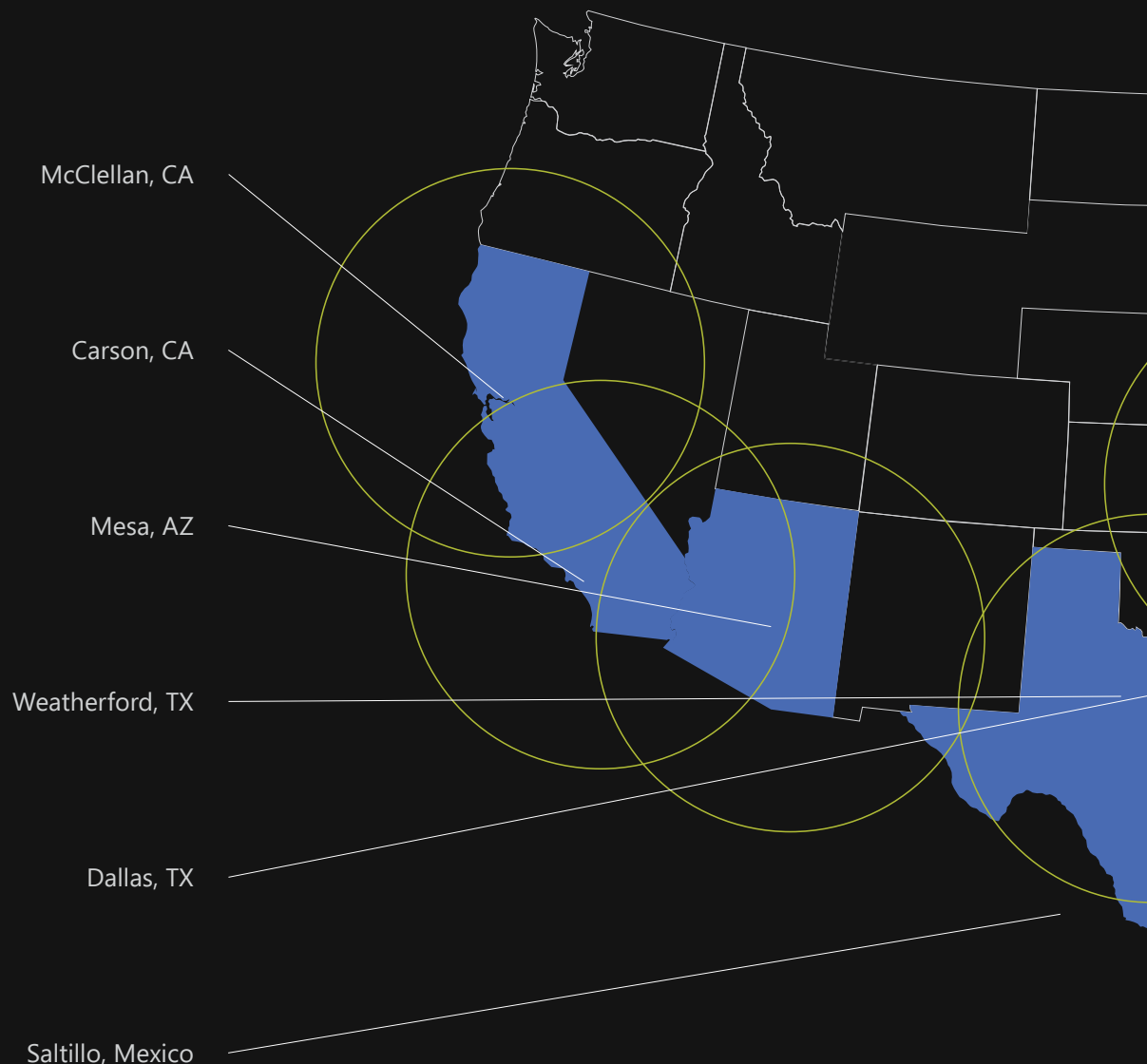
When customers demand, we're here to supply. We have flexible manufacturing facilities located coast-to-coast which are staffed with highly trained assembly professionals who can help expand production capabilities with precision, speed, and efficiency.

Builtmore is a turnkey solution that helps our customers meet the ebb and flow of an ever-changing marketplace. Our expertise in heavy to light duty specialty vehicle manufacturing, extensive ship-thru distribution network, and ability to retool our facilities provide our customers more assembly capacity where and when they need it most. It's no wonder why choose Builtmore for flexible and efficient contract manufacturing.

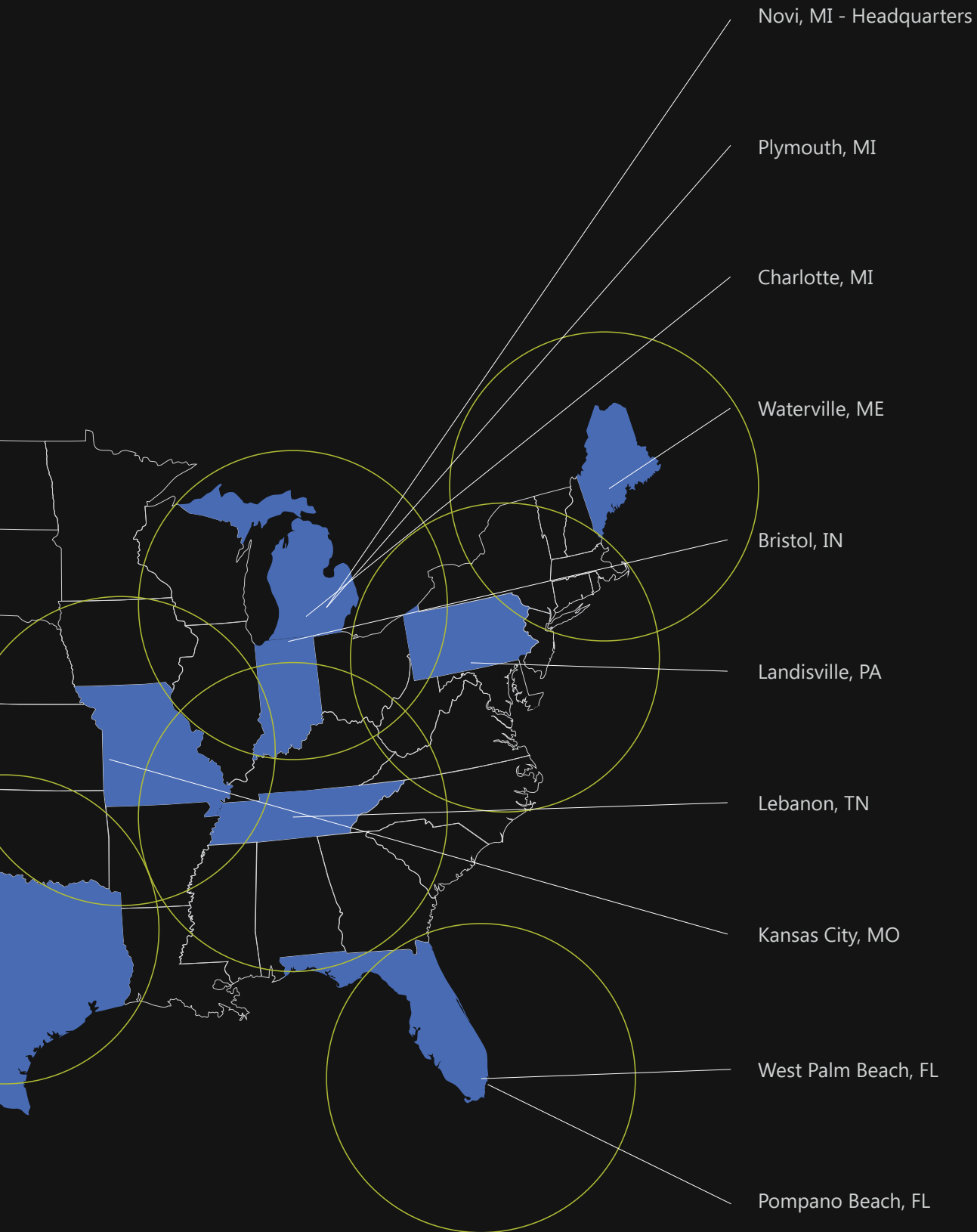


# Strategically placed manufacturing centers.

The Shyft Group features manufacturing centers located from the Pacific to the Atlantic—an extensive distribution network capable of reaching over 80% of the nation's population within a 300-mile radius of our facilities. This manufacturing reach offers the flexibility and manufacturing capacity to meet all customer demands with greater manufacturing efficiencies, lower distribution costs, and improved customer service. It also uniquely positions The Shyft Group to quickly and profitably take a regional brand to the national stage.



- 
- Shyft Group Operations Facilities
  - 300 Mile Radius from Operation Facility







[TheShyftGroup.com](https://TheShyftGroup.com)